

## Whiston Accident and Emergency department Monthly bulletin: January to May 2005

This bulletin provides a breakdown of all trauma<sup>1</sup> attendances at Whiston Accident and Emergency department between January and May 2005. More detailed analyses will be provided in TIIG quarterly reports, which will include information on all data providers.

Figure 1 illustrates the number of trauma attendances by month of attendance. During this five month period, February had the lowest number of trauma attendances at 3,329, with May having the highest, at 4,151.

Figure 1: Total number of trauma attendances by month, January to May 2005

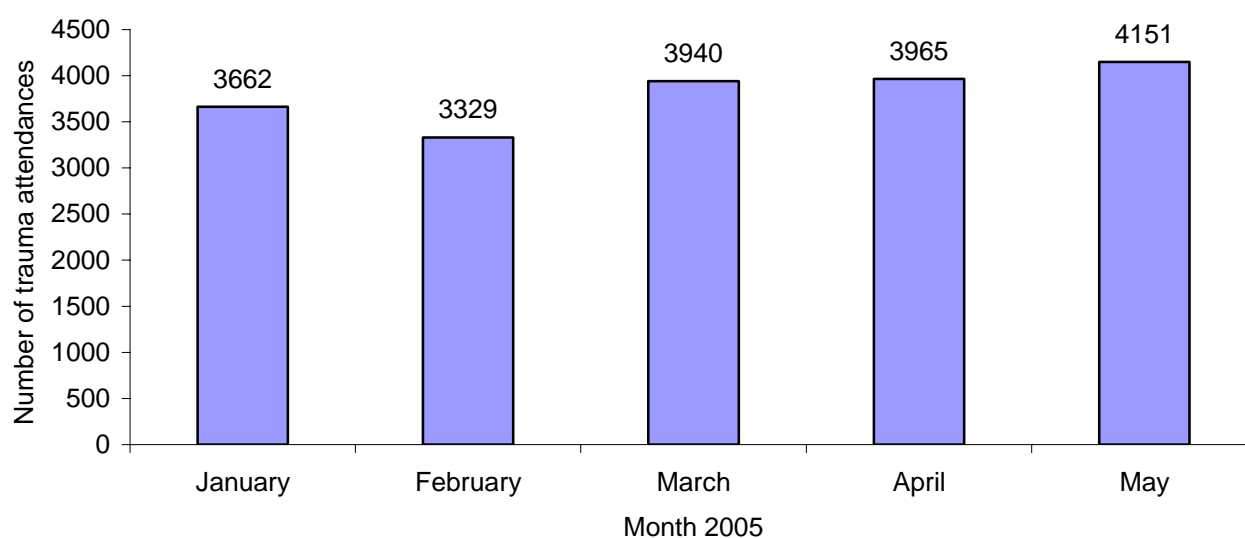
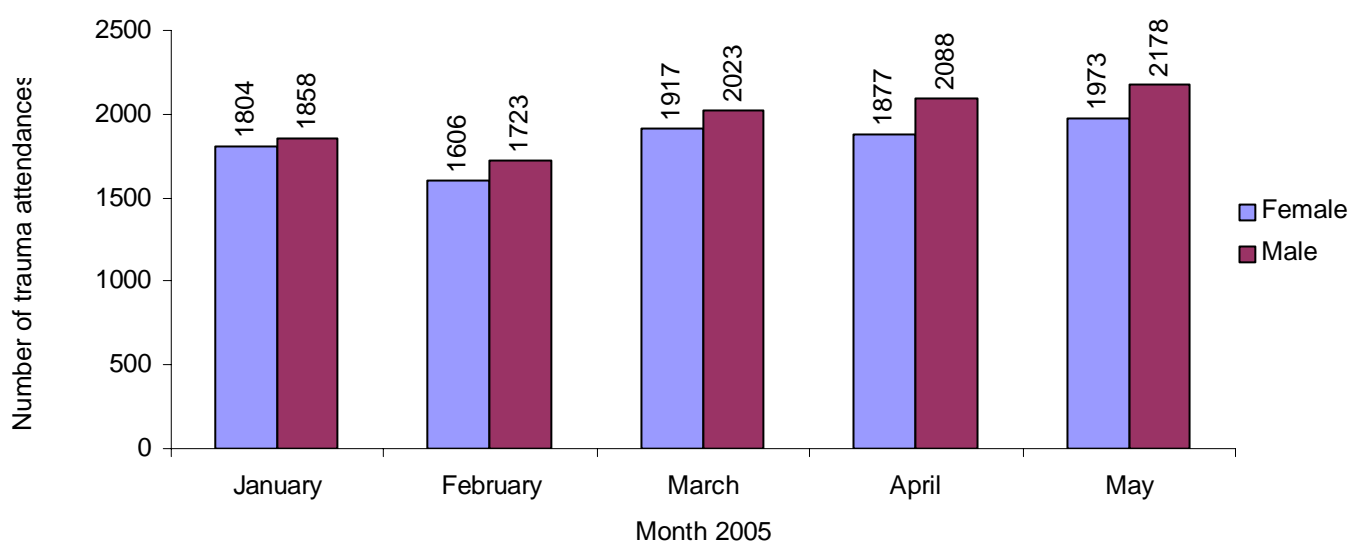


Figure 2 shows trauma attendances by gender. For all months there were more male trauma attendances than female.

Figure 2: Gender of trauma attendances by month, January to May 2005



<sup>1</sup>Trauma refers to any attendance that was an accident or intentional/unintentional injury.

Figure 3 illustrates age group of trauma attendances. For all months, the majority of trauma attendances were over the age of 14 years. This may be due to the close proximity of a local children's A&E department (Alder Hey).

Figure 3: Age group of trauma attendances by month, January to May 2005

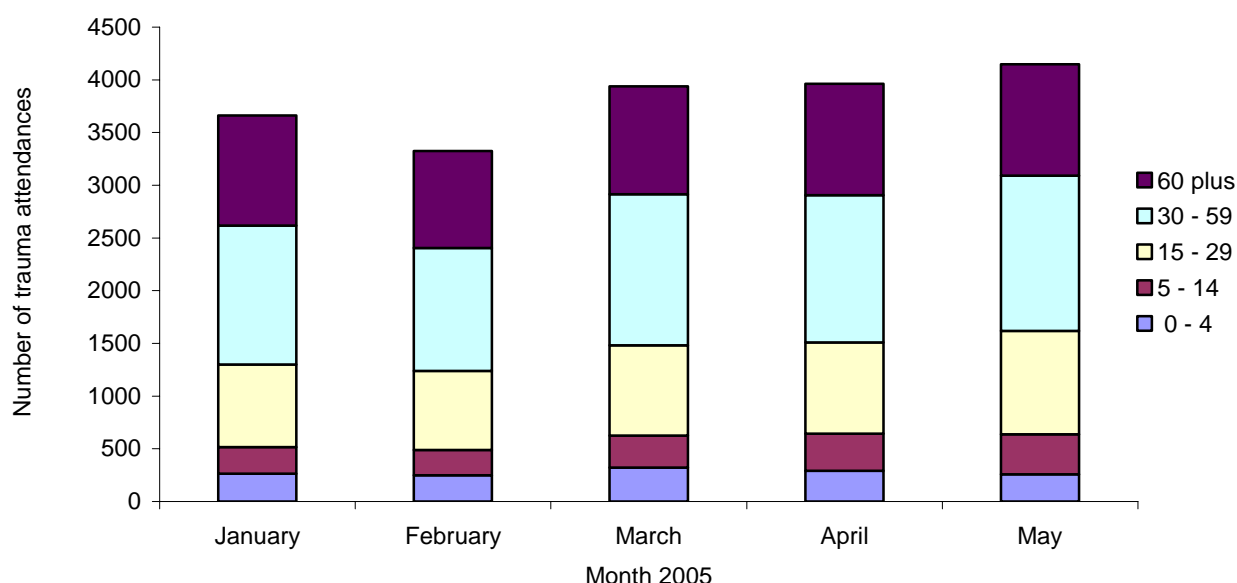


Table 1 details injury group of trauma attendances. Nearly half (48%) of trauma attendances were classed as 'other injury'. Further information on reason for A&E attendance is collected for all attendees and it is possible to examine the reasons for attendance for attendances classed as 'other injury'. This analysis will be provided in TIIG quarterly reports.

Table 1: Trauma attendances by injury group, January to May 2005

Injury Group	January	February	March	April	May	Total	Total %
Other Injury	1783	1554	1878	1888	2069	9172	48
Fall	872	811	937	955	992	4567	24
Road Traffic Accident	288	311	314	326	325	1564	8
Sports	201	165	228	218	194	1006	5
Assault	174	201	212	209	198	994	5
Foreign Body	103	86	103	136	119	547	3
Ingestion	91	72	88	85	77	413	2
Burns & Scalds	75	64	92	60	76	367	2
Head Injury	50	45	68	65	79	307	2
Deliberate Self-Harm	25	20	20	23	21	109	1
Firework	0	0	0	0	1	1	0
<b>Total</b>	<b>3662</b>	<b>3329</b>	<b>3940</b>	<b>3965</b>	<b>4151</b>	<b>19047</b>	<b>100</b>

Six in ten (62%) trauma attendances arrived at A&E via private transport. A third (32%) arrived via an ambulance.

Table 2: Trauma attendances by arrival mode, January to May 2005

Mode of arrival	January	February	March	April	May	Total	Total %
Private Transport	2189	2018	2484	2532	2655	11878	62
Ambulance	1301	1104	1244	1205	1251	6105	32
Public Transport	96	125	135	134	145	635	3
Walked In	54	61	61	68	68	312	2
Other	7	10	4	11	10	42	0
Police	15	11	12	15	22	75	0
<b>Total</b>	<b>3662</b>	<b>3329</b>	<b>3940</b>	<b>3965</b>	<b>4151</b>	<b>19047</b>	<b>100</b>

Sixty three percent of trauma attendances self referred themselves to A&E, whilst a parent referred 16%.

**Table 3: Trauma attendances by referral mode, January to May 2005**

Referrer	January	February	March	April	May	Total	Total %
Self Referral	2308	2166	2434	2437	2574	11919	63
Parents	560	487	596	720	708	3071	16
Emergency Services	328	302	389	387	372	1778	9
Other Hospital	131	95	144	93	126	589	3
Walk-in Centre	66	64	73	83	84	370	2
General Practitioner	66	56	75	68	73	338	2
Other Referrer	47	34	70	45	64	260	1
Employer	41	36	57	31	41	206	1
Grandparents	20	21	23	32	23	119	1
Carer	23	15	16	17	15	86	0
Police	12	14	17	18	21	82	0
A&E	18	15	13	9	18	73	0
Teacher	15	7	15	9	10	56	0
Primary Care	12	5	5	6	8	36	0
Guardian	3	3	7	7	8	28	0
School Nurse	10	6	2	2	4	24	0
Optician	1	0	1	1	1	4	0
District Nurse	0	1	2	0	0	3	0
Prison Service	1	1	1	0	0	3	0
Health Visitor	0	1	0	0	1	2	0
<b>Total</b>	<b>3662</b>	<b>3329</b>	<b>3940</b>	<b>3965</b>	<b>4151</b>	<b>19047</b>	<b>100</b>

The ethnicity of the majority (95%) of trauma attendances to Whiston A&E department was White.

**Table 4: Trauma attendances by ethnicity, January to May 2005**

Ethnicity	January	February	March	April	May	Total	Total %
White	3456	3167	3739	3773	3943	18078	95
Unknown	91	64	84	79	70	388	2
Black African	71	58	68	77	89	363	2
Black Caribbean	19	19	21	18	16	93	0
Chinese	13	7	10	6	18	54	0
Bangladeshi	5	8	10	3	8	34	0
Any Other Asian Background	4	2	4	3	3	16	0
Indian	1	0	3	3	2	9	0
Black Other	2	3	0	0	2	7	0
Pakistani	0	0	1	2	0	3	0
Asian Bangladeshi	0	1	0	1	0	2	0
<b>Total</b>	<b>3662</b>	<b>3329</b>	<b>3940</b>	<b>3965</b>	<b>4151</b>	<b>19047</b>	<b>100</b>

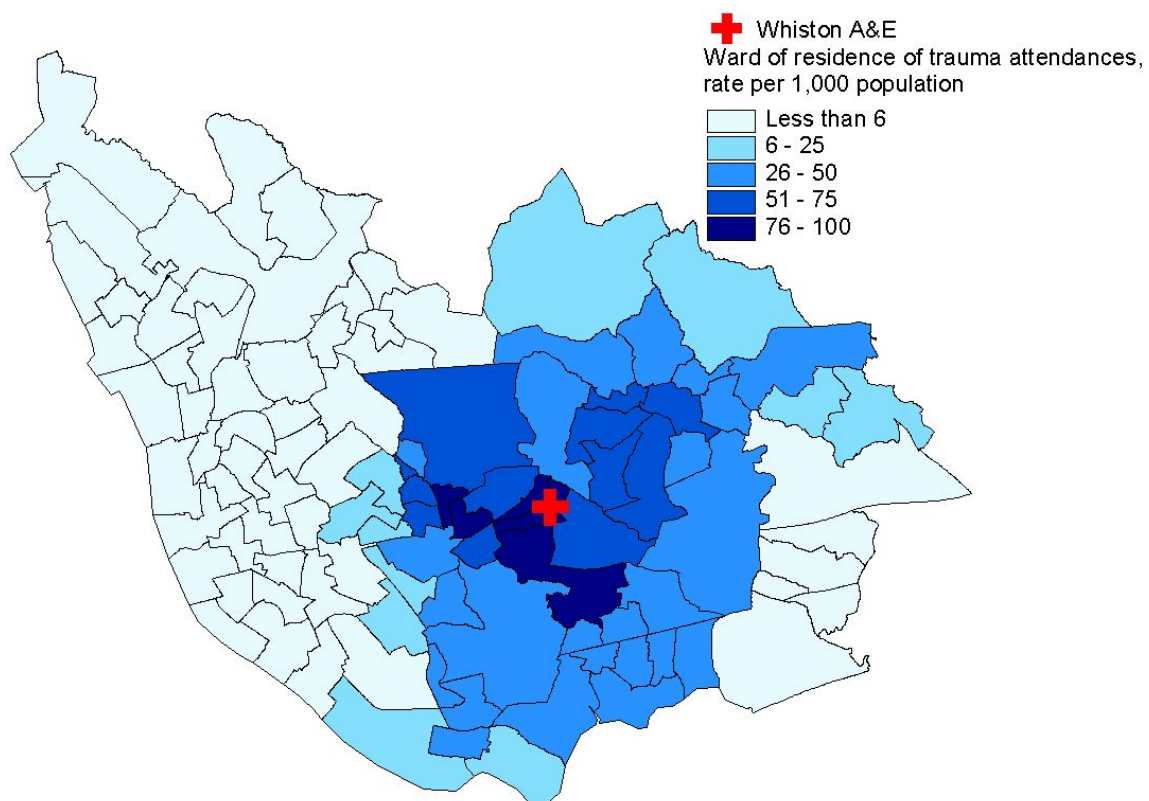
Table 5 details the discharge method of trauma attendances to Whiston A&E. A third (33%) of trauma attendances were admitted to hospital.

**Table 5: Discharge methods of trauma attendances, January to May 2005**

Discharge	January	February	March	April	May	Total	Total %
Discharged no follow up	1133	1074	1272	1381	1479	6339	33
Admissions	1296	1130	1325	1245	1305	6301	33
Discharged to General Practitioner (GP)	507	492	608	547	547	2701	14
Fracture Clinic	131	123	148	166	161	729	4
Did not wait	122	100	129	109	132	592	3
Sent to GP assessment Unit	97	65	87	125	113	487	3
A&E Review Clinic	83	66	63	79	75	366	2
Physiotherapy Clinic	53	44	44	53	66	260	1
Outpatient Clinic	35	48	44	46	42	215	1
Sent to Other Hospital	31	36	42	46	38	193	1
Discharged returning to GP clinic at Whiston A&E	41	16	33	35	25	150	1
Discharged with Ear/Nose/Throat appointment at Whiston	15	29	30	26	24	124	1
Return for Treatment	25	18	24	11	24	102	1
Other	93	88	91	96	120	488	3
<b>Total</b>	<b>3662</b>	<b>3329</b>	<b>3940</b>	<b>3965</b>	<b>4151</b>	<b>19047</b>	<b>100</b>

Figure 4 illustrates the spatial distribution of ward of residence of trauma attendances to Whiston A&E during January to May 2005. The wards of Prescott East and St Michaels had the highest rate of trauma attendances at A&E at 91 and 83 per 1,000 population respectively.

**Figure 4: Ward of residence of trauma attendances, rate per 1,000 population, January to May 2005**



Published July 2005

Zara Anderson

TIIG analyst

Centre for Public Health, Faculty of Health and Applied Social Sciences, Liverpool John Moores University  
 Castle House, North Street, Liverpool, L3 2AY

Tel: 0151 231 4505 Email: [z.a.anderson@livjm.ac.uk](mailto:z.a.anderson@livjm.ac.uk) Website: [www.nwpho.org.uk/ait](http://www.nwpho.org.uk/ait)