

This bulletin provides a breakdown of all trauma attendances at the Royal Liverpool Accident and Emergency (A&E) department between May 2007 and April 2008.

Figure 1 illustrates the number of trauma attendances by month of attendance. Trauma attendances peaked in October, with January having the least number of trauma attendances.

Figure 1: Total number of trauma attendances by month, May 2007 to April 2008

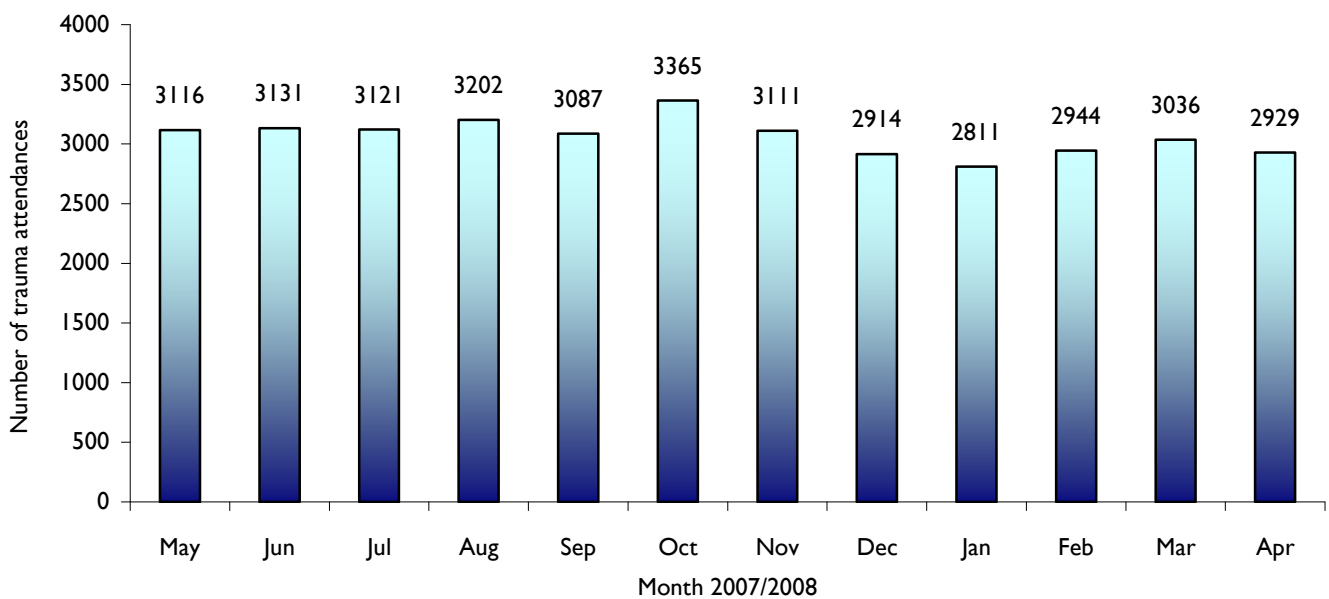


Figure 2 gives a breakdown of monthly trauma attendances by gender, illustrating that for all months there were more male trauma attendances than female presenting at the Royal Liverpool A&E department.

Figure 2: Gender of trauma attendances by month, May 2007 to April 2008

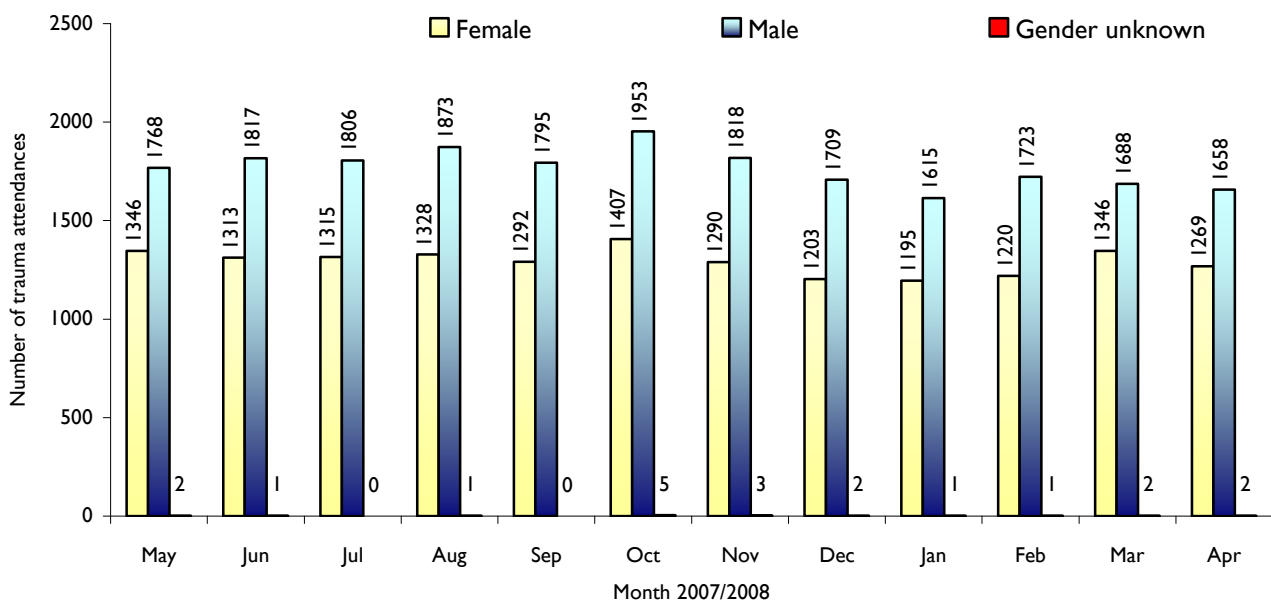


Figure 3 illustrates age group of trauma attendances. For all months, the vast majority of trauma attendances were made by people over the age of 14 years. The low number of trauma attendances under the age of 15 presenting at the Royal Liverpool A&E department is probably due to the close proximity of a local children's A&E department (Alder Hey).

Figure 3: Age group of trauma attendances by month, May 2007 to April 2008

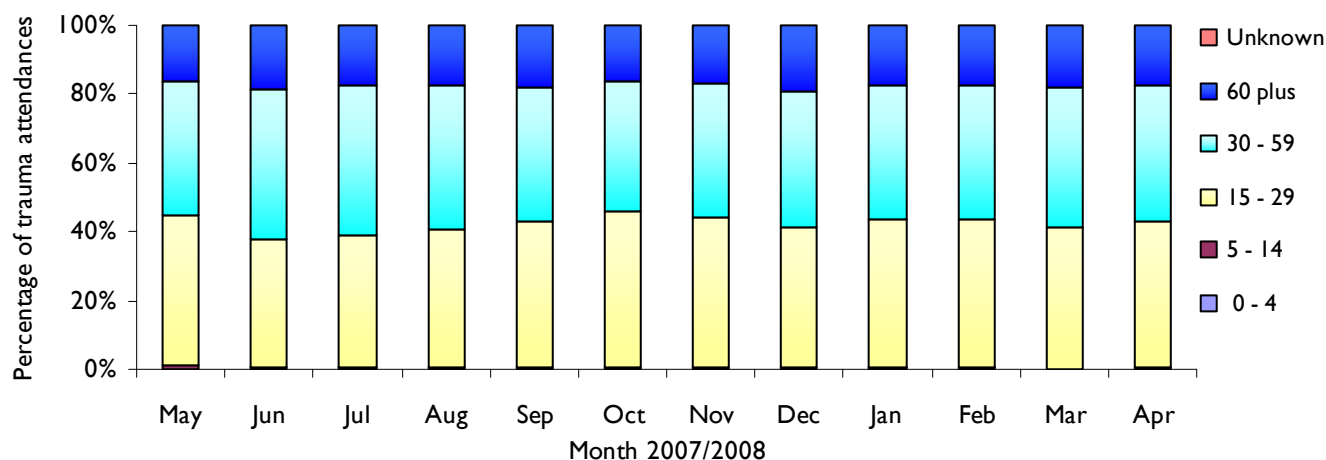


Table 1 details the injury group of trauma attendances. The most common form of injury leading to A&E attendance was body injury, representing 50% of trauma attendances. This category includes injuries such as head injuries and arm injuries, for example.

Table 1: Trauma attendances by injury group and month, May 2007 to April 2008

Injury Group	May	Jun	Jul	Aug	Sep	Oct	Nov	Dec	Jan	Feb	Mar	Apr	Total	%
Body Injury	1502	1467	1514	1698	1527	1627	1657	1402	1453	1599	1535	1558	18539	50
Fall	394	406	434	400	401	394	390	465	370	367	443	417	4881	13
Accident	429	421	398	356	447	490	279	283	273	256	287	280	4199	11
Assault	330	325	317	344	286	362	299	328	265	278	326	227	3687	10
Road Traffic Accident	211	260	209	178	218	213	268	245	221	210	223	232	2688	7
Overdose	81	110	122	100	76	105	92	86	123	114	99	106	1214	3
Self Harm	72	75	52	61	69	86	29	55	40	59	48	43	689	2
Sport Injury	52	31	32	31	35	42	53	18	31	28	37	36	426	1
Burn	32	26	27	24	20	33	20	19	23	26	27	26	303	1
Stab Wound	7	6	10	6	5	8	11	12	8	4	8	2	87	0
Electrical	4	3	4	1	2	2	8	1	3	1	3	2	34	0
Gun	2	1	2	3	1	3	3	0	1	2	0	0	18	0
Firework	0	0	0	0	0	0	2	0	0	0	0	0	2	0
Total	3116	3131	3121	3202	3087	3365	3111	2914	2811	2944	3036	2929	36767	100

Table 2 illustrates the location where assaults occurred for patients presenting with assault-related injuries. Four in five (81%) of all assault locations were unknown during May 2007 to April 2008. Of those known, over half (56%) occurred on the streetⁱⁱ.

Table 2: Assault attendances by location of incident and month, May 2007 to April 2008

Assault location	May	Jun	Jul	Aug	Sep	Oct	Nov	Dec	Jan	Feb	Mar	Apr	Total	%
Unknown	258	258	265	289	245	308	222	264	208	209	252	194	2972	81
Street	43	33	30	32	21	29	30	34	38	47	34	19	390	11
Bar/pub	5	12	2	1	7	4	17	12	6	7	20	2	95	3
Your home	8	6	3	9	4	5	11	5	3	3	6	2	65	2
Other	8	5	2	4	6	6	8	4	5	4	3	2	57	2
Club	3	6	6	2	2	0	8	2	2	5	8	7	51	1
Workplace	1	4	2	3	1	3	3	3	2	1	0	0	23	1
Someone else's home	1	1	5	3	0	4	0	2	1	1	2	0	20	1
Unable to answer	3	0	2	1	0	1	0	0	0	0	1	0	8	0
Refused to answer	0	0	0	0	0	2	0	2	0	1	0	1	6	0
Total	330	325	317	344	286	362	299	328	265	278	326	227	3687	100

Table 3 illustrates the number of individuals/attackers involved in the assault. During May 2007 to April 2008 information on number of attackers was not collected from the majority (81%) of assault patients. Where data was collected, just over half (54%) of assault patients had been assaulted by more than one person.

Table 3: Assault attendances by number of individuals involved in assault and month, May 2007 to April 2008

Number of attackers	May	Jun	Jul	Aug	Sep	Oct	Nov	Dec	Jan	Feb	Mar	Apr	Total	%
1	33	29	27	26	21	19	35	26	22	17	33	14	302	8
2	7	6	9	7	10	7	15	11	12	16	14	3	117	3
3	5	6	2	10	5	10	8	2	7	3	3	2	63	2
4	12	10	4	1	3	8	3	4	4	3	5	0	57	2
5 plus	10	13	7	5	3	7	13	15	8	16	11	8	116	3
Unknown	256	258	264	291	243	308	225	267	210	219	256	199	2996	81
Refused to answer	6	1	3	1	0	2	0	2	1	2	1	1	20	1
Unable to answer	1	2	1	3	1	1	0	1	1	2	3	0	16	0
Total	330	325	317	344	286	362	299	328	265	278	326	227	3687	100

Table 4 illustrates gender of attackers. Of those known 88% were male, compared with 9% female.

Table 4: Assault attendances by gender of attackers and month, May 2007 to April 2008

Gender of attackers	May	Jun	Jul	Aug	Sep	Oct	Nov	Dec	Jan	Feb	Mar	Apr	Total	%
Both	2	3	1	0	1	3	1	2	0	2	4	1	20	1
Female	6	3	4	3	9	3	12	4	4	4	6	1	59	2
Male	57	55	44	41	32	43	57	50	48	50	55	28	560	15
Unknown	262	260	268	296	243	310	226	269	211	217	256	196	3014	82
Refused to answer	1	0	0	2	0	2	1	2	1	2	1	1	13	0
Unable to answer	2	4	0	2	1	1	2	1	1	3	4	0	21	1
Total	330	325	317	344	286	362	299	328	265	278	326	227	3687	100

Table five shows that the relationship between assault attendee and those involved in the assault was unknown in over four in five (82%) incidents during May 2007 to April 2008. Where data was collected, seven in ten (69%) assault patients had been assaulted by a stranger.

Table 5: Assault attendances by relationship with attacker and month, May 2007 to April 2008

Relationship with attacker	May	Jun	Jul	Aug	Sep	Oct	Nov	Dec	Jan	Feb	Mar	Apr	Total	%
Unknown	261	263	270	292	244	315	231	267	211	222	259	198	3033	82
Stranger	46	37	33	37	26	27	42	46	39	35	42	19	429	12
Acquaintance/Friend	10	10	5	3	7	8	6	4	6	11	6	1	77	2
Bouncer	1	4	3	1	1	0	9	3	3	2	4	2	33	1
Partner	5	2	1	3	2	1	1	3	2	1	3	2	26	1
Family member	3	2	1	3	2	1	3	1	0	0	4	1	21	1
Unable to answer	1	3	1	1	2	2	3	1	1	2	2	0	19	1
Ex-partner	0	0	1	2	1	4	2	0	2	2	3	1	18	0
Refused to answer	0	1	0	1	0	2	0	2	1	2	1	1	11	0
Work client/Customer	1	3	1	0	0	1	1	1	0	0	0	2	10	0
Police	2	0	0	1	1	1	0	0	0	1	2	0	8	0
Work mate/Colleague	0	0	1	0	0	0	1	0	0	0	0	0	2	0
Total	330	325	317	344	286	362	299	328	265	278	326	227	3687	100

Table 6 shows method of attack. Of those known, 73% were attacked with a body part, such as a fist.

Table 6: Assault attendances by method of attack and month, May 2007 to April 2008

Method of attack	May	Jun	Jul	Aug	Sep	Oct	Nov	Dec	Jan	Feb	Mar	Apr	Total	%
Unknown	260	262	269	294	245	311	227	272	211	218	255	198	3022	82
Body part (e.g. fist)	47	41	40	31	32	38	48	40	36	39	51	23	466	13
Other	14	8	4	6	5	3	3	1	7	3	6	0	60	2
Bottle	3	4	2	4	3	2	4	8	2	2	1	1	36	1
Knife	1	3	2	4	0	0	7	2	2	5	3	3	32	1
Blunt object	1	4	0	1	0	3	3	1	4	4	3	0	24	1
Unable to answer	1	2	0	2	0	1	3	1	0	5	3	0	18	0
Glass	2	1	0	0	1	2	2	0	1	0	2	1	12	0
Refused to answer	0	0	0	0	0	2	1	2	1	2	1	1	10	0
Firearm	1	0	0	2	0	0	0	1	1	0	1	0	6	0
Acquaintance/Friend	0	0	0	0	0	0	1	0	0	0	0	0	1	0
Total	330	325	317	344	286	362	299	328	265	278	326	227	3687	100

Table 7 shows that of those known, 30% of assault attendances had no intention of informing the police of their attack.

Table 7: Assault attendances that have or intend to inform the police by month, May 2007 to April 2008

Informed the police?	May	Jun	Jul	Aug	Sep	Oct	Nov	Dec	Jan	Feb	Mar	Apr	Total	%
Unknown	256	258	264	288	242	307	219	263	207	208	252	194	2958	80
No	21	16	15	20	13	16	20	29	12	20	28	9	219	6
Yes	53	51	38	36	31	39	60	36	46	50	46	24	510	14
Total	330	325	317	344	286	362	299	328	265	278	326	227	3687	100

Table 8 shows that where data was collected, 57% of assault attendances had consumed alcohol within three hours prior to their attack.

Table 8: Assault attendances who had consumed alcohol within three hours prior to their attack by month, May 2007 to April 2008

Alcohol consumption	May	Jun	Jul	Aug	Sep	Oct	Nov	Dec	Jan	Feb	Mar	Apr	Total	%
Unknown	256	258	264	288	242	307	219	263	207	208	252	194	2958	80
No	17	20	31	27	22	29	29	19	21	24	19	14	272	7
Refused to answer	1	0	1	1	2	4	3	3	2	3	3	3	26	1
Unable to answer	25	13	5	4	4	2	8	3	1	5	2	3	75	2
Yes	31	34	16	24	16	20	40	40	34	38	50	13	356	10
Total	330	325	317	344	286	362	299	328	265	278	326	227	3687	100

Published June 2008

Dan J Hungerford (TIIG Analyst) and Zara Anderson (TIIG Project Lead)

Centre for Public Health, Liverpool John Moores University, Liverpool, L3 2AY

Tel: 0151 231 4417/4505 Email: d.j.hungerford@ljmu.ac.uk or z.a.anderson@ljmu.ac.uk

Website: www.nwpho.org.uk/ait (please note data requests should now be made through the website)

ⁱ Trauma relates to all A&E attendances presenting as a result of an intentional or unintentional injury.

ⁱⁱ Further information on the location of assault, for example street/club name, is collected at the Royal Liverpool A&E department. This information is provided by TIIG to local agencies such as Citysafe in a separate report to the one produced here. For further information on this report please contact the authors, whose details can be found at the end of this report.