



## Royal Liverpool Accident and Emergency Department Monthly Bulletin: August 2008 to March 2009

This bulletin provides a breakdown of all trauma<sup>1</sup> attendances at the Royal Liverpool Accident and Emergency department (AED) between August 2008 and March 2009.

Figure 1 illustrates the number of trauma attendances by month of attendance. Trauma attendances peaked in November (2,958), with March (2,550) having the least number of trauma attendances.

**Figure 1: Total number of trauma attendances by month, August 2008 to March 2009**

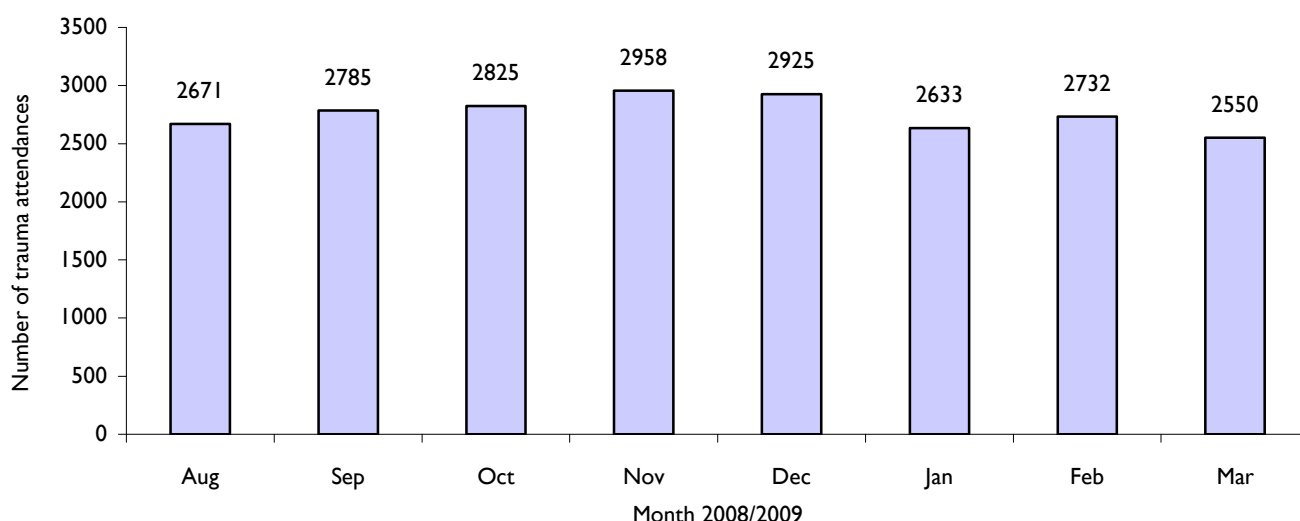


Figure 2 gives a breakdown of monthly trauma attendances by gender, illustrating that for all months there were more male (55%) trauma attendances than female presenting at the Royal Liverpool AED.

**Figure 2: Gender of trauma attendances by month, August 2008 to March 2009**

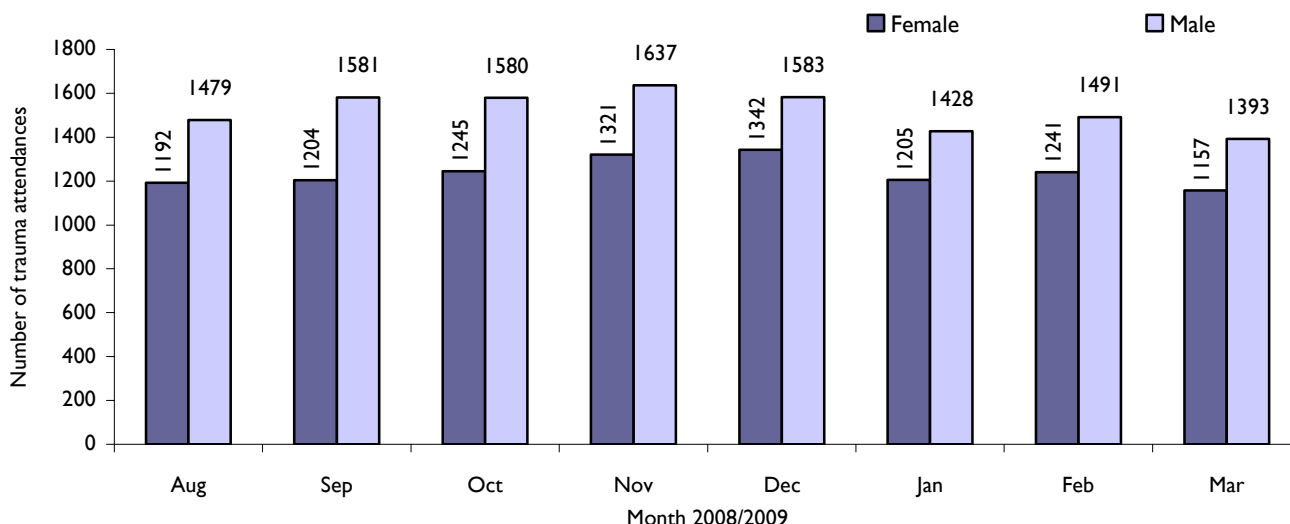


Figure 3 illustrates age group of trauma attendances. For all months, the vast majority of trauma attendances were made by people over the age of 14 years. The low number of trauma attendances under the age of 15 presenting at the Royal Liverpool AED could possibly be due to the close proximity of a local children's AED (Alder Hey).

**Figure 3: Age group of trauma attendances by month, August 2008 to March 2009**

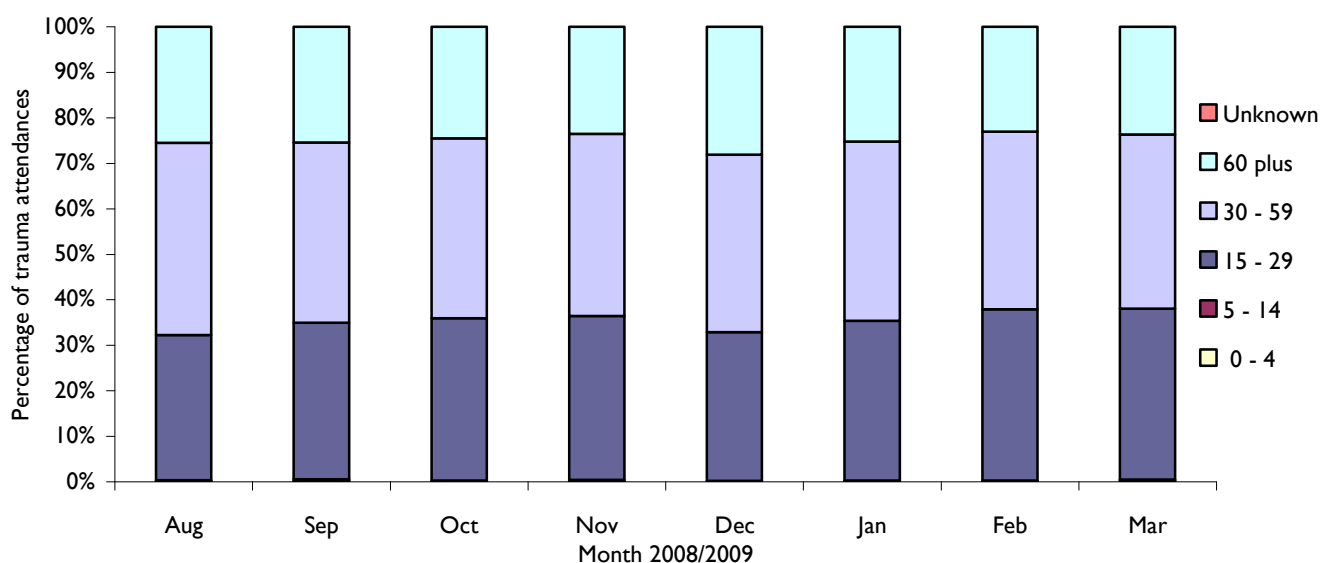


Table I details the injury group of trauma attendances. The most common form of injury leading to AED attendance was “other accident”, representing 68% of trauma attendances.

**Table I: Trauma attendances by injury group and month, August 2008 to March 2009<sup>ii</sup>**

Injury group	Aug	Sep	Oct	Nov	Dec	Jan	Feb	Mar	Total	%
Other accident	1862	1931	2003	2005	1949	1699	1901	1570	14920	68
Fall	322	326	324	364	411	367	296	355	2765	13
Assault	187	249	212	249	271	240	197	253	1858	8
Overdose	99	96	83	88	102	103	124	101	796	4
Road traffic accident	108	83	80	106	89	106	95	94	761	3
Sport injury	44	58	86	94	70	77	78	144	651	3
Burn	20	23	21	28	15	22	27	14	170	1
Self-harm	29	19	16	24	18	18	13	19	156	1
Firework	<5	<5	<5	<5	<5	<5	<5	<5	<5	0
<b>Total</b>	<b>2671</b>	<b>2785</b>	<b>2825</b>	<b>2958</b>	<b>2925</b>	<b>2633</b>	<b>2732</b>	<b>2550</b>	<b>22079</b>	<b>100</b>

Assault attendees presenting at the Royal Liverpool AED between August 2008 and March 2009 were mainly male (76%) and the majority (62%) were aged between 15 and 29 years of age.

Further information collected via the assault patient questionnaire is now available for March 2009 and is presented in the assault and last drink location report also available from TIIG. This report includes information relating to: specific location of assault; number of attackers, assault attendees' relationship to the attacker; whether the attendee had been drinking prior to the assault; last drink location; weapon used in attack; and whether the attendee has or intends to inform the police.

Published June 2009  
 Dan J Hungerford (TIIG Analyst)  
 Centre for Public Health, Liverpool John Moores University, 5<sup>th</sup> Floor, Kingsway House, Liverpool, L3 2AJ  
 Tel: 0151 231 8728 Email: [d.j.hungerford@ljmu.ac.uk](mailto:d.j.hungerford@ljmu.ac.uk)  
 Website: [www.tiig.info](http://www.tiig.info) (please note data requests should be made through the website)

<sup>i</sup> Trauma relates to all AED attendances presenting as a result of an accident or intentional/unintentional injury.

<sup>ii</sup> Please note that all numbers less than five have been suppressed in line with patient confidentiality and if there is only one number <5 in a category then two numbers will be suppressed at the next level (e.g. <10) in order to prevent back calculations from totals.