

**Please Note: Important changes to data**

In July 2008 a new IT system was introduced at the Royal Liverpool causing significant changes to the type and scope of information collected in the accident and emergency department (AED). This report is the first to contain data from the new IT system, which is **NOT COMPARABLE** with data pre-August 2008. Also this report does not include data covering the extra assault and alcohol-related questions. Data are currently inaccessible through the information department's data extract, from May 2008 onwards. We are currently working with colleagues at the Royal Liverpool to rectify this problem and hope these data will be available in the near future.

This bulletin provides a breakdown of all trauma<sup>i</sup> attendances at the Royal Liverpool AED between August 2008 and January 2009.

Figure 1 illustrates the number of trauma attendances by month of attendance. Trauma attendances peaked in November, with January having the fewest number of trauma attendances.

**Figure 1: Total number of trauma attendances by month, August 2008 to January 2009**

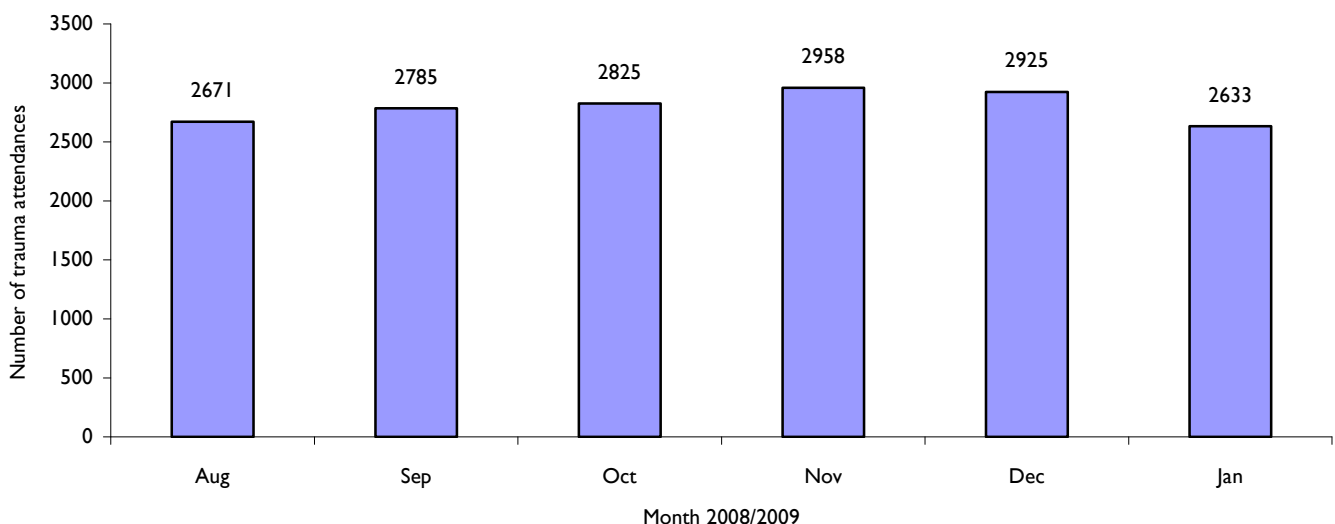


Figure 2 gives a breakdown of monthly trauma attendances by gender, illustrating that for all months there were more male trauma attendances than female presenting at the Royal Liverpool AED.

**Figure 2: Gender of trauma attendances by month, August 2008 to January 2009**

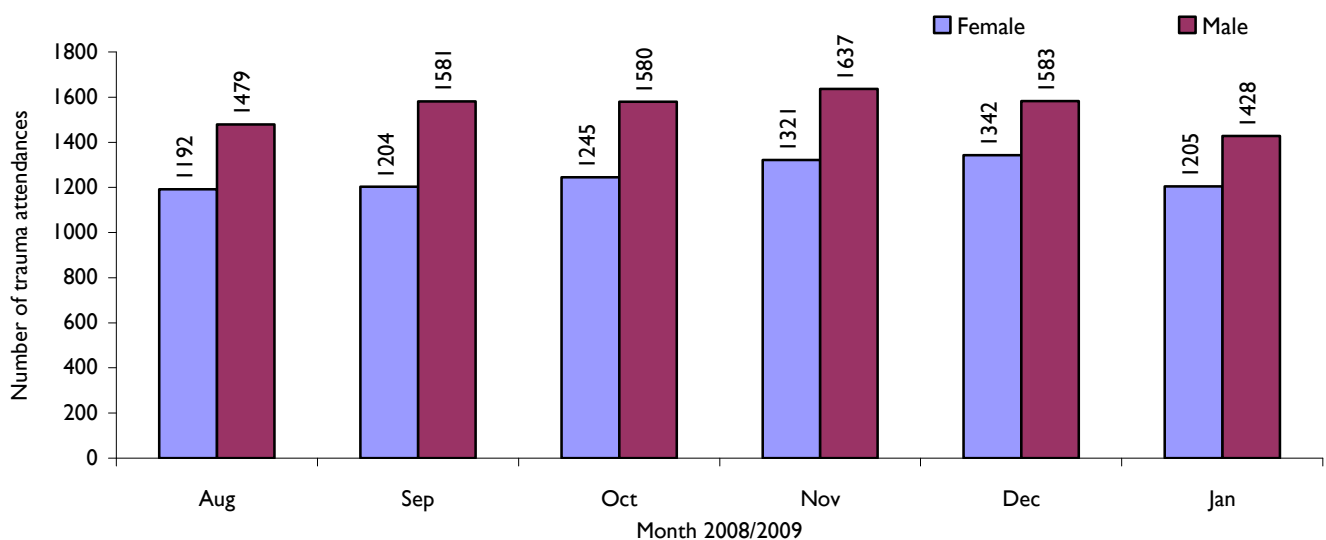


Figure 3 illustrates age group of trauma attendances. For all months, the vast majority of trauma attendances were made by people over the age of 14 years. The low number of trauma attendances under the age of 15 presenting at the Royal Liverpool AED is probably due to the close proximity of a local children's AED (Alder Hey).

**Figure 3: Age group of trauma attendances by month, August 2008 to January 2009**

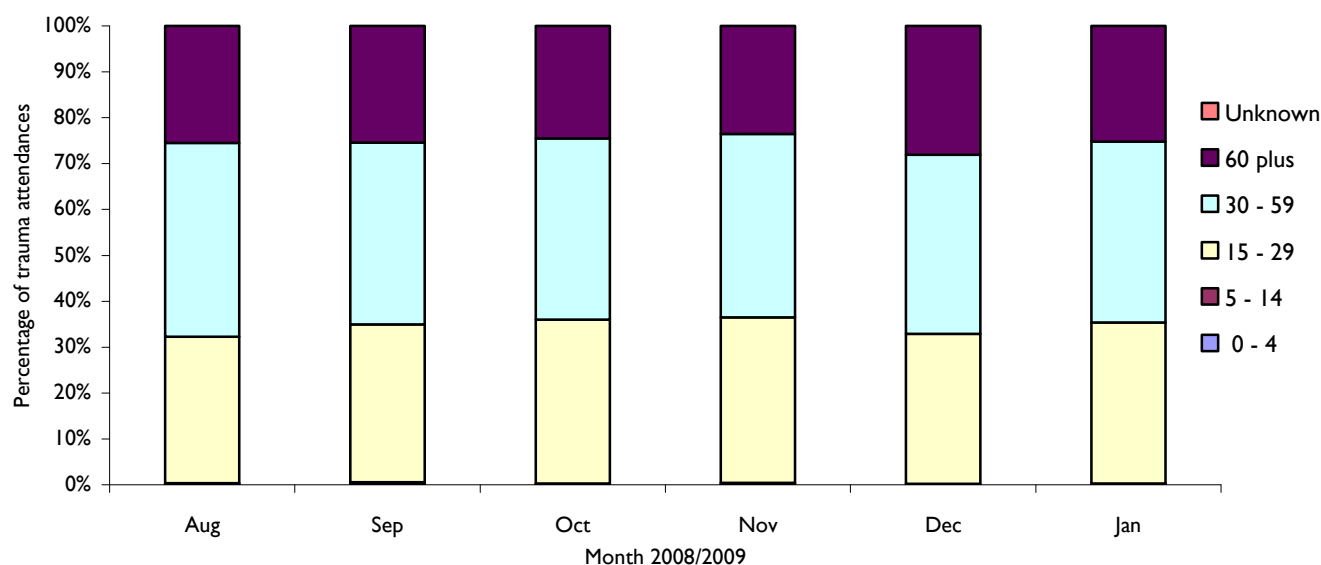


Table I details the injury group of trauma attendances. The most common form of injury leading to an AED attendance was other accident, representing 68% of trauma attendances.

**Table I: Trauma attendances by injury group and month, August 2008 to January 2009**

| Injury group                 | Aug  | Sep  | Oct  | Nov  | Dec  | Jan  | Total | %   |
|------------------------------|------|------|------|------|------|------|-------|-----|
| Other accident <sup>ii</sup> | 1862 | 1931 | 2003 | 2005 | 1949 | 1700 | 11450 | 68  |
| Fall                         | 322  | 326  | 324  | 364  | 411  | 367  | 2114  | 13  |
| Assault                      | 187  | 249  | 212  | 249  | 271  | 240  | 1408  | 8   |
| Road traffic accident        | 108  | 83   | 80   | 106  | 89   | 106  | 572   | 3   |
| Overdose                     | 99   | 96   | 83   | 88   | 102  | 103  | 571   | 3   |
| Sport injury                 | 44   | 58   | 86   | 94   | 70   | 77   | 429   | 3   |
| Burn                         | 20   | 23   | 21   | 28   | 15   | 22   | 129   | 1   |
| Self-harm                    | 29   | 19   | 16   | 24   | 18   | 18   | 124   | 1   |
| Total                        | 2671 | 2785 | 2825 | 2958 | 2925 | 2633 | 16797 | 100 |

Assault attendees presenting at the Royal Liverpool AED between August 2008 and January 2009 were mainly male (76%) and the majority (63%) were aged between 15 and 29 years of age.

Published February 2008

Dan Hungerford (TIIG Analyst) and Zara Anderson (TIIG Project Lead)

Centre for Public Health, Research Directorate, Liverpool John Moores University,  
5<sup>th</sup> Floor, Kingsway House, Hatton Garden, Liverpool, L3 2AJ

Tel: 0151 231 8728 or Email: [d.j.hungerford@ljmu.ac.uk](mailto:d.j.hungerford@ljmu.ac.uk) or [z.a.anderson@ljmu.ac.uk](mailto:z.a.anderson@ljmu.ac.uk)

Website: [www.tiig.info](http://www.tiig.info) (please note data requests should now be made through the website)

<sup>i</sup> Trauma relates to all A&E attendances presenting as a result of an intentional or unintentional injury.

<sup>ii</sup> Due to low numbers firework injury has been included in the "other accident" injury group