

Data included in this report is **NOT COMPARABLE** to data pre-August 2008. Also this report does not include data covering the extra assault and alcohol-related questions. Data are currently inaccessible through the information department's data extract, from May 2008 onwards. We are currently working with colleagues at the Royal Liverpool to rectify this problem and hope these data will be available in the near future.

This bulletin provides a breakdown of all traumaⁱ attendances at the Royal Liverpool AED between August 2008 and February 2009.

Figure 1 illustrates the number of trauma attendances by month of attendance. Trauma attendances peaked in November, with February having the fewest number.

Figure 1: Total number of trauma attendances by month, August 2008 to February 2009

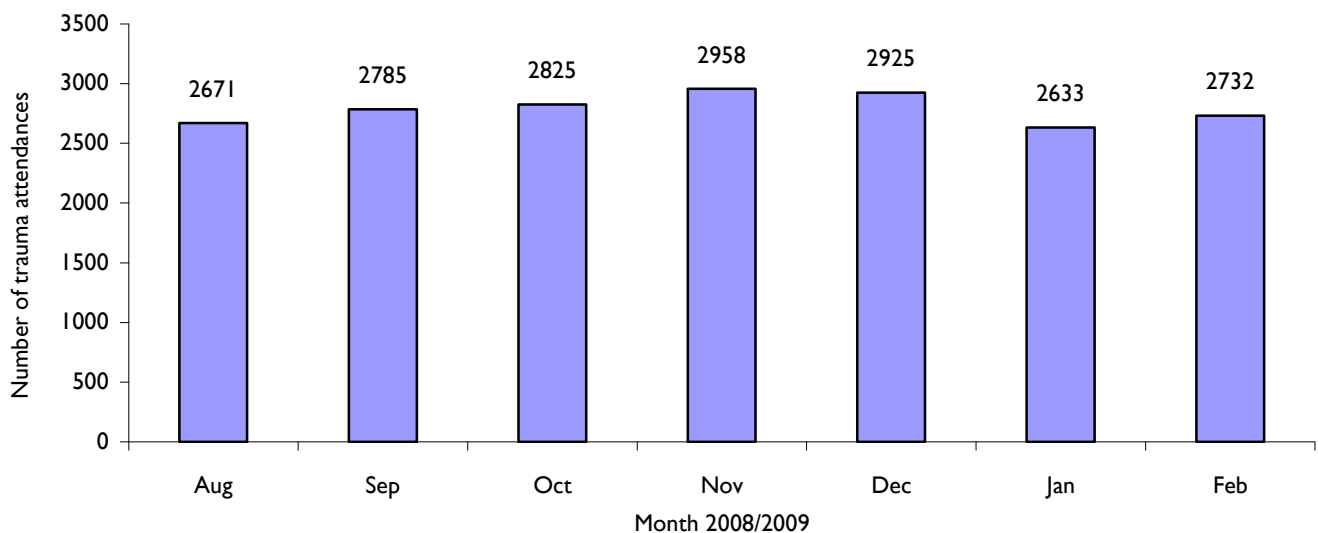


Figure 2 gives a breakdown of monthly trauma attendances by gender, illustrating that for all months there were more males than females presenting at the Royal Liverpool AED.

Figure 2: Gender of trauma attendances by month, August 2008 to February 2009

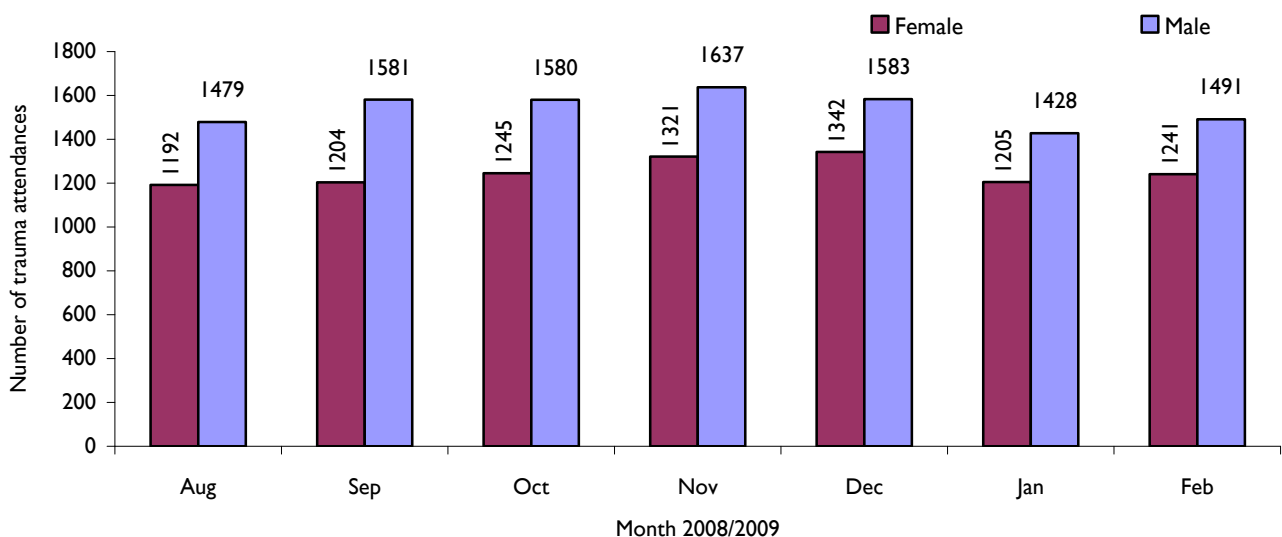


Figure 3 illustrates age group of trauma attendances. For all months, the vast majority of trauma attendances were made by people over the age of 14 years. The low number of trauma attendances under the age of 15 presenting at the Royal Liverpool AED is probably due to the close proximity of a local children's AED (Alder Hey).

Figure 3: Age group of trauma attendances by month, August 2008 to February 2009

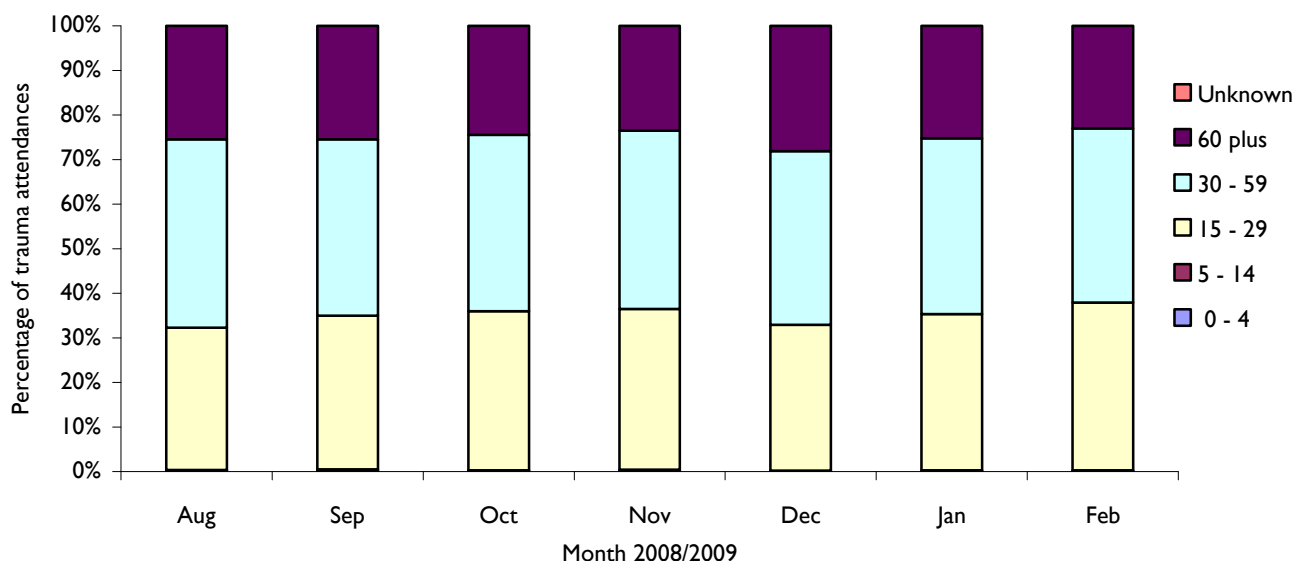


Table I details the injury group of trauma attendances. The most common form of injury leading to an AED attendance was other accident, representing 68% of trauma attendances.

Table I: Trauma attendances by injury group and month, August 2008 to February 2009ⁱⁱ

Injury Group	Aug	Sep	Oct	Nov	Dec	Jan	Feb	Total	%
Other accident	1862	1931	2003	2005	1949	1699	1901	13350	68
Fall	322	326	324	364	411	367	296	2410	12
Assault	187	249	212	249	271	240	197	1605	8
Overdose	99	96	83	88	102	103	124	695	4
RTA	108	83	80	106	89	106	95	667	3
Sport injury	44	58	86	94	70	77	78	507	3
Burn	20	23	21	28	15	22	27	156	1
Self-harm	29	19	16	24	18	18	13	137	1
Total	2671	2785	2825	2958	2925	2632	2731	19527	100

Assault attendees presenting at the Royal Liverpool AED between August 2008 and February 2009 were mainly male (76%) and the majority (63%) were aged between 15 and 29 years of age.

Published May 2009

Dan Hungerford (TIIG Analyst) and Zara Anderson (TIIG Project Lead)

Centre for Public Health, Research Directorate, Liverpool John Moores University,
5th Floor, Kingsway House, Hatton Garden, Liverpool, L3 2AJ

Tel: 0151 231 8728 or Email: d.j.hungerford@ljmu.ac.uk or z.a.anderson@ljmu.ac.uk

Website: www.tiig.info (please note data requests should now be made through the website)

ⁱ Trauma relates to all A&E attendances presenting as a result of an intentional or unintentional injury.

ⁱⁱ Firework injuries have been excluded from this table due to low numbers, for anyone requiring information on firework injuries please contact TIIG directly.