

Published April 2008

Dan Hungerford (TIIG Analyst) and Zara Anderson (TIIG Project Lead)

Centre for Public Health, Liverpool John Moores University, Liverpool, L3 2AY

Tel: 0151 231 4417/4505 or Email: d.j.hungerford@ljmu.ac.uk or z.a.anderson@ljmu.ac.uk

Website: www.nwpho.org.uk/ait (please note data requests should now be made through the website)

This bulletin provides a breakdown of all trauma¹ attendances at Arrowe Park Accident and Emergency (A&E) department between April 2007 and March 2008.

Figure 1 illustrates the number of trauma attendances by month of attendance. Trauma attendance peaked in September, with December having the least number of trauma attendances.

Figure 1: Total number of trauma attendances by month, April 2007 to March 2008

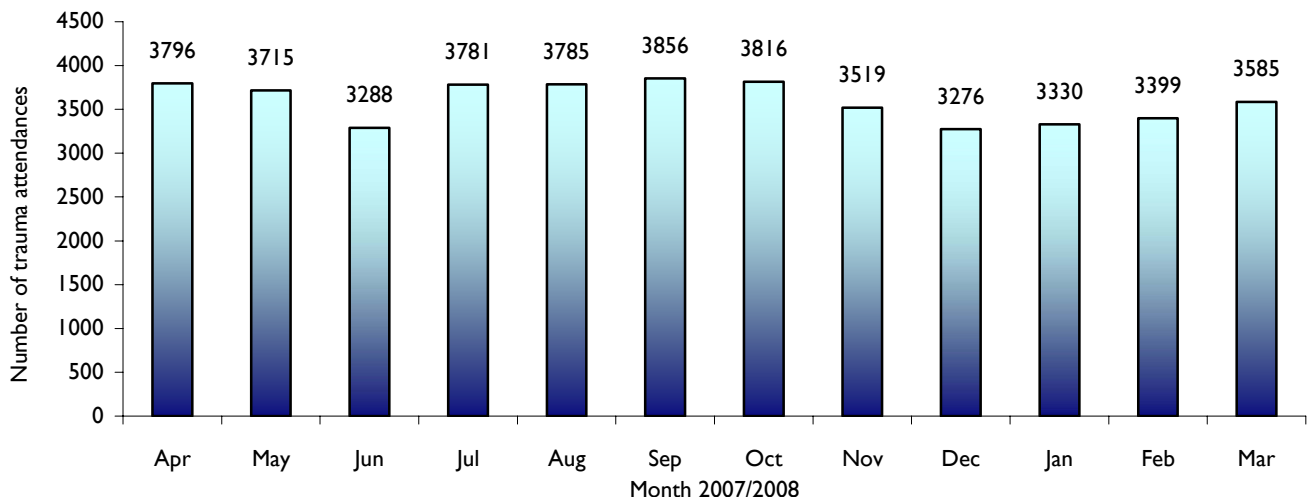
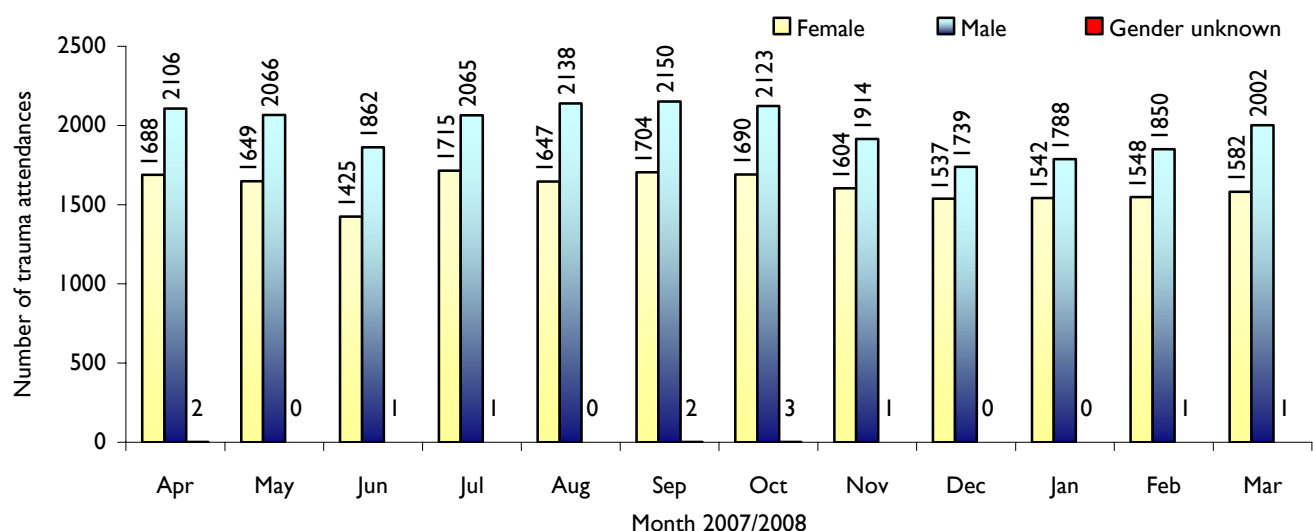


Figure 2 illustrates trauma attendances by gender. For all months there were more male trauma attendances than female presenting at Arrowe Park A&E department.

Figure 2: Gender of trauma attendances by month, April 2007 to March 2008



¹Trauma refers to all A&E attendances presenting as a result of an accident or intentional/unintentional injury.

Trauma attendances were more likely to be aged 15 to 59 years old (Figure 3).

Figure 3: Age group of trauma attendances by month, April 2007 to March 2008

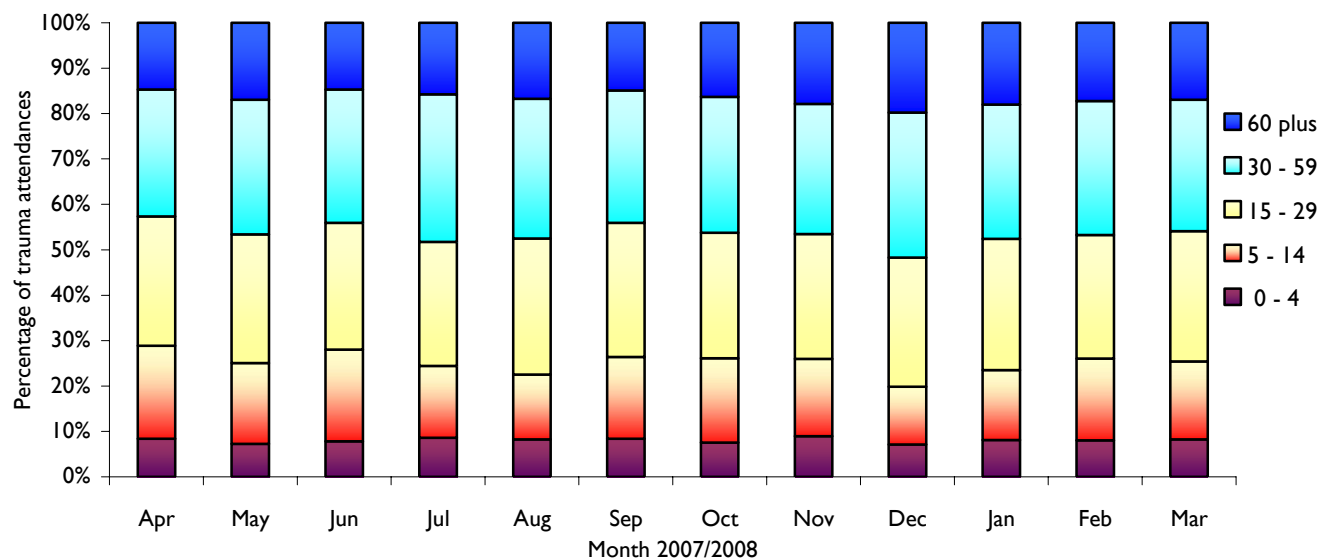


Table 1 details injury group of trauma attendances. The most common cause of injury was by a fall, accounting for 42% of all trauma attendances.

Table 1: Trauma attendances by injury group, April 2007 to March 2008

Injury Group	Apr	May	Jun	Jul	Aug	Sep	Oct	Nov	Dec	Jan	Feb	Mar	Total	%
Fall	1693	1596	1341	1564	1583	1651	1574	1470	1383	1370	1366	1354	17945	42
Struck	519	622	492	589	631	589	633	574	495	464	423	499	6530	15
Road traffic accident	293	301	328	356	305	336	328	364	342	313	289	321	3876	9
Other accident	285	232	220	302	219	324	301	303	294	289	528	518	3815	9
Wound/cut	310	346	347	334	363	323	303	268	301	300	254	277	3726	9
Assault	262	220	207	215	256	168	209	177	178	196	185	182	2455	6
Sports injury	202	162	147	138	172	211	233	149	96	192	164	223	2089	5
Deliberate self harm	90	111	100	110	87	79	96	84	83	70	65	85	1060	2
Bite	48	37	41	65	73	59	40	31	28	34	27	33	516	1
Burn/scald	40	40	36	47	46	32	36	43	41	43	47	41	492	1
Ingestion	40	31	21	47	27	59	42	39	25	41	33	28	433	1
Non fire burn/scald	5	7	0	9	15	11	7	6	4	6	0	10	80	0
Inhalation	4	7	4	1	4	6	5	4	2	10	7	11	65	0
Electrical	2	2	1	1	0	4	3	2	3	0	2	2	22	0
Stab	1	1	1	2	3	2	0	3	0	2	1	0	16	0
Drown/immersion	0	0	1	0	0	1	5	1	0	0	0	0	8	0
Non drown asphyxia	0	0	1	0	0	0	0	0	1	0	6	0	8	0
Glass	2	0	0	0	1	0	1	0	0	0	1	1	6	0
Firearm	0	0	0	1	0	1	0	1	0	0	1	0	4	0
Firework	0	0	0	0	0	0	0	0	0	0	0	0	0	0
Total	3796	3715	3288	3781	3785	3856	3816	3519	3276	3330	3399	3585	43146	100

Table 2 shows the disposal method of trauma attendances. The majority (87%) of trauma attendances were discharged after treatment.

Table 2: Disposal method of trauma attendances, April 2007 to March 2008

Discharge Method	Apr	May	Jun	Jul	Aug	Sep	Oct	Nov	Dec	Jan	Feb	Mar	Total	%
Admitted	437	467	410	491	501	502	463	457	455	431	438	475	5527	13
Discharged	3359	3248	2878	3290	3284	3354	3353	3062	2821	2899	2961	3110	37619	87
Total	3796	3715	3288	3781	3785	3856	3816	3519	3276	3330	3399	3585	43146	100

Table 3 illustrates injury group of trauma attendances for the 0 to 4 and 60 plus age groups. During April 2007 to March 2008 falls accounted for the highest group of trauma attendances for both age groups, accounting for 48% and 71% of child and older adult injuries respectively.

Table 3: Trauma attendances aged 0 to 4 and 60 plus by injury group, April 2007 to March 2008*

Injury Group	Aged 0 - 4		Aged 60 plus	
Assault	3	0	38	1
Bite	50	1	83	1
Burn/scald	111	3	38	1
Deliberate self harm	0	0	42	1
Electrical	3	0	3	0
Fall	1669	48	5076	71
Ingestion	190	5	27	0
Inhalation	2	0	12	0
Non drown asphyxia	2	0	0	0
Non fire burn/scald	74	2	9	0
Other accident	480	14	427	6
Road traffic accident	112	3	308	4
Sports injury	2	0	21	0
Stab	0	0	1	0
Struck	517	15	500	7
Wound/cut	262	8	584	8
Total	3477	100	7169	100

Table 4 illustrates the location where assaults occurred for patients presenting with assault-related injuries. The primary locations for assaults were street/road (33%), public space (31%) and domestic violence/home (16%).

Table 4: Assault attendances by general location of incident, April 2007 to March 2008*

Assault location	Apr	May	Jun	Jul	Aug	Sep	Oct	Nov	Dec	Jan	Feb	Mar	Total	%
Street/road	99	76	38	84	91	45	60	65	65	69	52	73	817	33
Public space	91	71	88	50	76	59	84	29	59	55	53	43	758	31
Domestic violence/home	36	34	36	35	37	32	21	39	17	37	32	26	382	16
Public house	8	8	13	18	14	11	12	16	10	17	15	15	157	6
Night club	9	7	1	3	10	5	5	12	12	6	3	7	80	3
Public park	8	4	8	10	12	6	7	4	3	1	2	2	67	3
Work	2	5	9	4	7	4	8	3	5	1	6	8	62	3
Other/unknown	5	2	4	2	4	1	4	2	1	2	4	5	36	1
School	0	6	2	2	0	4	4	3	2	2	7	2	34	1
Railway station	0	3	1	0	0	0	2	2	1	3	4	0	16	1
Leisure facility	2	1	0	3	2	0	0	0	1	0	5	1	15	1
Shop/shopping centre	0	2	1	2	1	0	1	1	0	0	0	0	8	0
Car park	0	0	3	2	1	1	0	0	0	0	0	0	7	0
Public transport	0	0	3	0	0	0	1	0	0	2	1	0	7	0
Bus station	1	0	0	0	0	0	0	0	1	1	1	0	4	0
Hospital	1	1	0	0	0	0	0	1	0	0	0	0	3	0
Details withheld by patient	0	0	0	0	0	0	0	0	1	0	0	0	1	0
Football	0	0	0	0	1	0	0	0	0	0	0	0	1	0
Total	262	220	207	215	256	168	209	177	178	196	185	182	2455	100

*Percentages may not add to one hundred due to rounding

Data for April 2007 to March 2008 highlighted that the primary location of assaults was Birkenhead Town Centre, accounting for almost a third (30%) of assault locations. Wallasey and Seacombe accounted for 14% of assault locations during this period (Table 5).

Table 5: Assault attendances by location of incident, April 2007 to March 2008

Assault location	Apr	May	Jun	Jul	Aug	Sep	Oct	Nov	Dec	Jan	Feb	Mar	Total	%
Birkenhead Town Centre	75	63	54	66	76	50	67	59	58	56	56	63	743	30
Wallasey/Seacombe	41	28	30	28	30	32	30	29	16	31	29	27	351	14
Bidston/Prenton/Oxton	26	28	16	18	25	9	21	19	15	24	13	12	226	9
New Ferry/Rock Ferry	25	19	24	16	21	16	16	15	12	13	14	12	203	8
Moreton/Leasowe	11	20	13	15	19	10	12	11	11	5	14	9	150	6
Refused to answer	12	12	14	13	20	8	11	6	9	5	10	9	129	5
Greasby/Upton/Arrowe Park	11	8	16	11	9	5	9	7	9	12	8	10	115	5
Liverpool City Centre	19	7	8	5	7	8	6	9	12	8	10	11	110	4
Bromborough	7	6	12	4	9	3	6	5	7	11	7	5	82	3
New Brighton	10	7	3	10	10	8	10	2	2	7	4	5	78	3
Bebington	5	7	6	3	7	4	5	3	4	1	7	5	57	2
Unknown	4	2	1	5	6	3	3	0	12	7	2	4	49	2
Heswall/Pensby/Thingwall	7	2	2	7	7	3	4	3	0	5	3	3	46	2
Meols/Frankby/Hoylake	5	3	5	3	3	4	3	3	3	4	2	3	41	2
Neston/Parkgate	2	1	1	9	3	1	3	2	5	3	1	2	33	1
West Kirkby	1	7	1	0	2	2	2	2	2	2	3	2	26	1
Ellesmere Port/Cheshire Oaks	1	0	1	2	1	2	1	1	1	1	1	0	12	0
Barnston	0	0	0	0	1	0	0	1	0	0	0	0	2	0
Hooton	0	0	0	0	0	0	0	0	0	1	1	0	2	0
Total	262	220	207	215	256	168	209	177	178	196	185	182	2455	100

Table 6 shows the number of attackers involved in assaults requiring A&E treatment. Over half (58%) of assaults involved one attacker, yet a third (32%) involved two or more attackers.

Table 6: Assault attendances by number of attackers, April 2007 to March 2008

Number of attackers	Apr	May	Jun	Jul	Aug	Sep	Oct	Nov	Dec	Jan	Feb	Mar	Total	%
1 attacker	137	125	123	131	149	94	121	125	116	109	102	96	1428	58
2 Attackers	32	18	16	18	25	18	24	8	7	16	25	18	225	9
>2 Attackers	64	52	52	51	54	32	51	31	39	54	42	35	557	23
Unknown	29	25	16	15	28	24	13	13	16	17	16	33	245	10
Total	262	220	207	215	256	168	209	177	178	196	185	182	2455	100

Figure 4 shows the number of all trauma attendances and assault attendances only who had been drinking prior to the incident occurring. Between April 2007 and March 2008 7% (range: 6% to 9%) of trauma attendees had been drinking prior to the incident, compared with between 43% (range: 32% to 52%) of assault attendees only.

Figure 4: Alcohol related trauma attendance, all trauma and assaults only, April 2007 to March 2008

