

This bulletin provides a breakdown of all attendancesⁱ at Aintree Accident and Emergency (A&E) department between April 2008 and March 2009.

Figure 1 illustrates the number of A&E attendances by month of attendance. March had the highest number of attendances at Aintree A&E department during this time period (n=7,607)

Figure 1: Total number of A&E attendances by month, April 2008 to March 2009

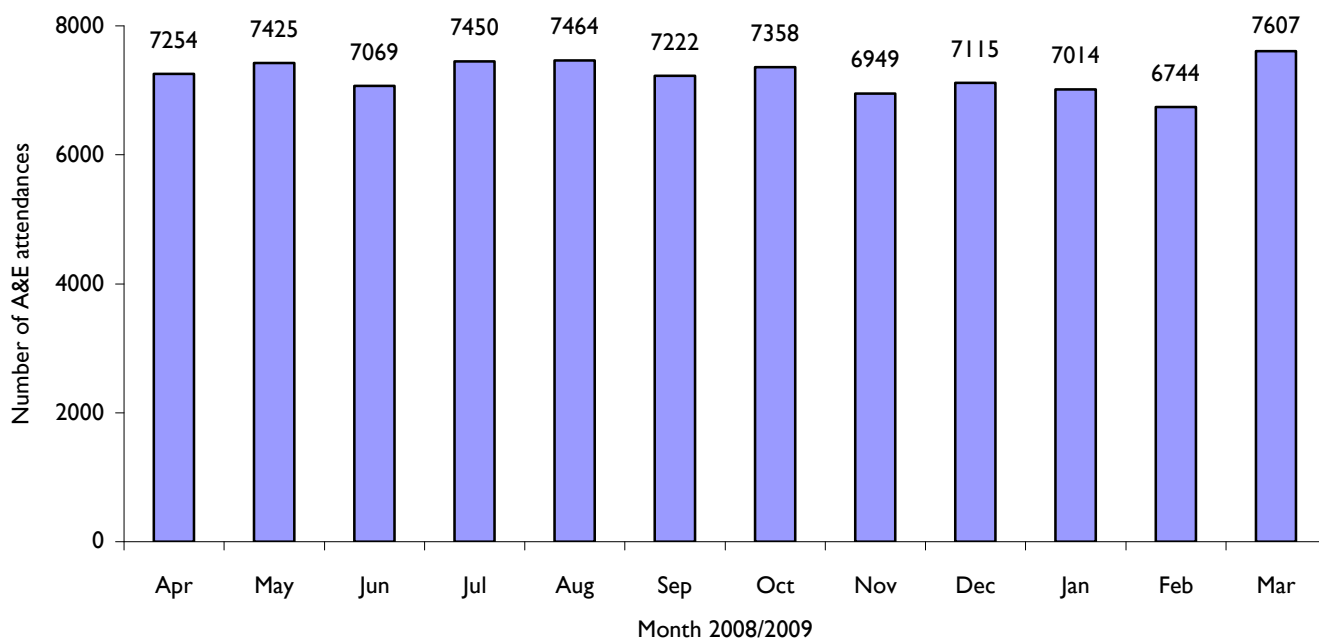


Figure 2 shows A&E attendances by gender. There were more male than female attendances presenting at Aintree A&E department.

Figure 2: Gender of A&E attendances by month, April 2008 to March 2009

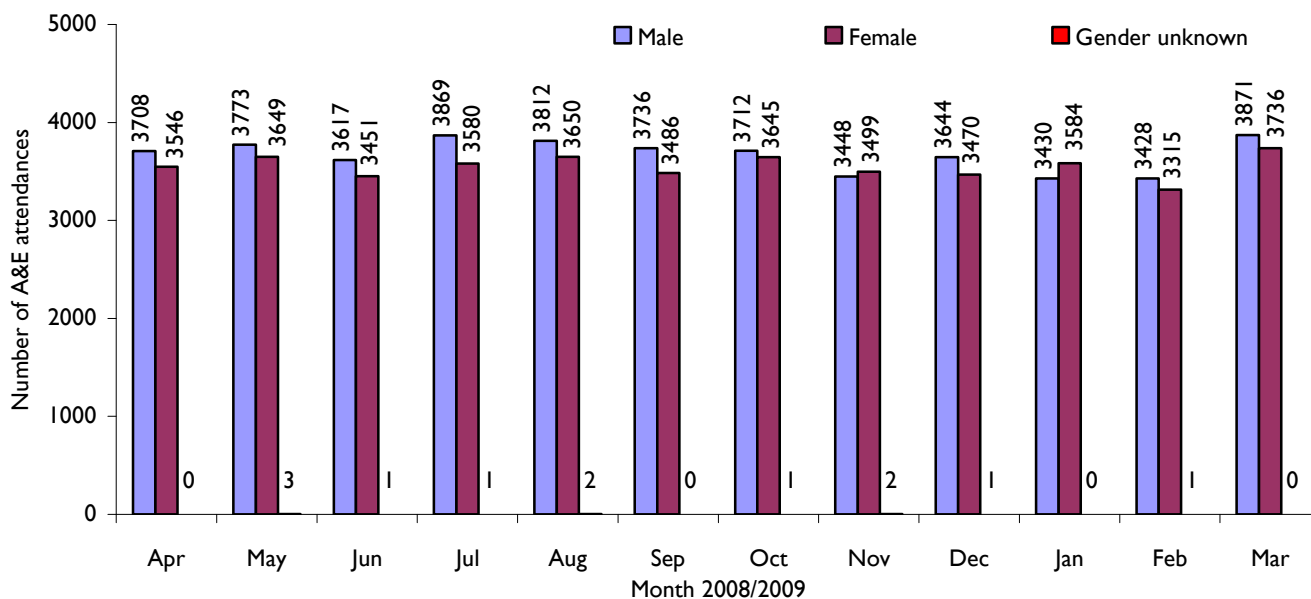


Figure 3 illustrates age group of A&E attendances for each month. The majority of A&E attendances were aged 15 plus. This is probably due to the close proximity of a local children's A&E department (Alder Hey).

Figure 3: Age group of A&E attendances by month, April 2008 to March 2009

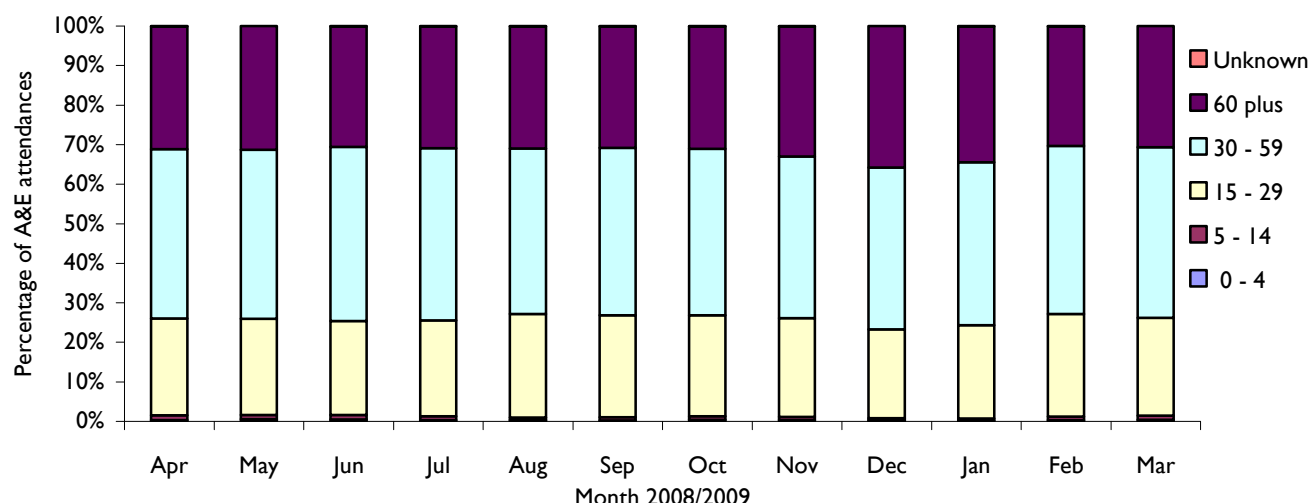


Table 1 details the injury group of A&E attendances. In over three quarters (80%) of attendances, injury group was recorded as other or unknown. This group will include A&E attendances that are not injury related, such as heart attacks. Of those injury groups recorded, falls accounted for 47% of attendances, road traffic accidents 18% and assaults 15%.

Table 1: A&E attendances by injury group, April 2008 to March 2009ⁱⁱ

Injury group	Apr	May	Jun	Jul	Aug	Sep	Oct	Nov	Dec	Jan	Feb	Mar	Total	%
Other/unknown	5804	5916	5734	5997	5980	5703	5812	5552	5701	5527	5372	6036	69134	80
Fall	670	694	672	665	665	721	699	659	722	772	659	695	8293	10
Road traffic accident	272	273	217	255	258	250	301	256	232	243	248	267	3072	4
Assault	201	251	195	229	214	231	220	203	230	221	192	241	2628	3
Sport	172	150	131	143	173	185	163	142	97	130	136	209	1831	2
Self	132	135	105	153	167	126	154	127	127	111	127	150	1614	2
Firework	<5	<5	<15	<5	<10	<10	<10	5	<5	<5	<5	<5	56	0
Dead	<5	<5	<5	<5	<5	<5	<5	5	<5	<10	<10	<10	43	0
Total	7254	7425	7069	7450	7464	7222	7358	6949	7115	7014	6744	7607	86671	100

Table 2 illustrates the location where assaults occurred for patients presenting with assault-related injuries. The primary locations of assault were a public space (52%), other (22%) and the home (21%).

Table 2: Assault attendances by location of incident, April 2008 to March 2009

Assault location	Apr	May	Jun	Jul	Aug	Sep	Oct	Nov	Dec	Jan	Feb	Mar	Total	%
Public space	100	127	96	123	125	121	108	100	129	97	108	128	1362	52
Other	53	52	39	40	40	53	50	54	45	58	35	62	581	22
Home	38	55	49	56	41	47	48	45	47	57	37	37	557	21
Work	<10	14	<10	<10	<10	<10	11	<5	<10	<10	<10	<10	92	4
Walton Prison	<5	<5	<5	<5	<5	<5	<5	<5	<5	<5	<5	<5	17	1
School	<5	<5	<5	<5	<5	<5	<5	<5	<5	<5	<5	<5	13	0
Altcourse Prison	<5	<5	<5	<5	<5	<5	<5	<5	<5	<5	<5	<5	6	0
Total	201	251	195	229	214	231	220	203	230	221	192	241	2628	100

Table 3 provides data on whether an assault attendee had consumed alcohol within three hours prior to their attack. Where data was collected 59% of assault attendances had consumed alcohol prior to attack.

Table 3: Number of assault attendances who had consumed alcohol within three hours prior to their attack, April 2008 to March 2009

Assault Drink	Apr	May	Jun	Jul	Aug	Sep	Oct	Nov	Dec	Jan	Feb	Mar	Total	%
Unknown	171	174	130	150	143	153	145	144	159	167	142	182	1860	71
No	9	29	30	36	34	27	35	23	26	27	15	21	312	12
Yes	21	48	35	43	37	51	40	36	45	27	35	38	456	17
Total	201	251	195	229	214	231	220	203	230	221	192	241	2628	100

Table 4 shows the location where falls occurred for patients presenting with fall-related injuries. The primary location for falls was the home (54%), followed by a public space (29%).

Table 4: Fall attendances by location of incident, April 2008 to March 2009

Fall location	Apr	May	Jun	Jul	Aug	Sep	Oct	Nov	Dec	Jan	Feb	Mar	Total	%
Home	362	369	401	360	368	374	350	362	391	387	325	393	4442	54
Public space	191	208	164	196	174	194	204	176	215	257	227	185	2391	29
Other	63	83	69	70	88	109	99	76	71	90	72	80	970	12
Work	46	29	33	33	32	36	42	40	41	28	28	30	418	5
School	8	<5	5	5	<5	7	<5	5	<5	5	7	<5	57	1
In patient - Aintree	<5	<5	<5	<5	<5	<5	<5	<5	<5	<5	<5	<5	<10	0
Altcourse Prison	<5	<5	<5	<5	<5	<5	<5	<5	<5	<5	<5	<5	<10	0
Walton Prison	<5	<5	<5	<5	<5	<5	<5	<5	<5	<5	<5	<5	<10	0
Total	670	694	672	665	665	721	699	659	722	772	659	695	8293	100

Table 5 provides data on the discharge method of A&E attendances at Aintree hospital. Just under half (48%) of A&E attendees were dischargedⁱⁱⁱ.

Table 5: Discharge method of trauma attendances, April 2008 to March 2009

Discharge method	Apr	May	Jun	Jul	Aug	Sep	Oct	Nov	Dec	Jan	Feb	Mar	Total	%
Admitted to hospital	2673	2594	2555	2643	2677	2664	2821	2646	2811	2741	2582	2767	32174	37
Discharged	2193	2587	2301	2348	2375	2088	2280	2015	2030	1923	1806	2204	26150	30
Discharged to care of GP	762	742	790	894	747	897	777	796	728	688	753	701	9275	11
Discharged to return if condition gets worse	392	284	247	300	407	319	279	335	291	409	353	509	4125	5
Fracture clinic	266	295	274	325	312	332	294	259	275	280	282	318	3512	4
A&E clinic	230	211	238	193	238	275	226	185	212	224	228	248	2708	3
Patient left department	228	258	171	236	215	179	189	212	229	193	203	232	2545	3
Other/unknown	142	103	160	150	149	114	132	121	138	153	139	190	1691	2
Discharged to other hospital	77	96	101	94	87	73	85	77	69	77	91	86	1013	1
Physiotherapy A&E	58	63	60	62	67	69	61	75	73	81	75	98	842	1
Own discharge	68	45	50	56	49	61	69	58	74	79	65	65	739	1
Patient did not answer when called for treatment	56	52	36	36	32	38	40	59	59	35	53	59	555	1
Ear/nose/throat	34	31	28	39	38	42	41	42	47	53	41	54	490	1
Ophthalmology clinic	20	19	24	25	27	25	24	16	26	17	26	31	280	0
Died in department	16	17	7	16	15	13	12	25	21	23	15	14	194	0
Maxillary Facial Unit	17	10	14	14	13	16	17	7	11	15	14	20	168	0
Sent to theatre	10	8	9	5	8	10	<5	11	9	12	8	<5	95	0
Discharged to dentist	9	6	<5	6	<5	<5	6	7	<5	<5	<5	<5	55	0
Police custody	<5	<5	<5	5	<5	<5	<5	<5	5	7	6	<5	46	0
Falls clinic	<5	<5	<5	<5	<5	<5	<5	<5	<5	<5	<5	<5	5	0
Brought in dead	<5	<5	<5	<5	<5	<5	<5	<5	<5	<5	<5	<5	<5	0
Transfer to ward	<5	<5	<5	<5	<5	<5	<5	<5	<5	<5	<5	<5	<5	0
Xray tomorrow	<5	<5	<5	<5	<5	<5	<5	<5	<5	<5	<5	<5	<5	0
Total	7254	7425	7069	7450	7464	7222	7358	6949	7115	7014	6744	7607	86671	100

Published June 2009

Dan Hungerford (TIIG Analyst)

Centre for Public Health, Research Directorate, Liverpool John Moores University, Liverpool, L3 2AJ

Tel: 0151 231 8728 Email: d.j.hungerford@ljmu.ac.uk

Website: www.tiig.info (please note data requests should be made through the website)

ⁱ For other A&E departments, TIIG reports on trauma incidents only. However, this report includes all attendances at Aintree A&E department. This is due to the high number of 'unknown' injury groups amongst attendances at Aintree A&E which makes it difficult to analyse trauma cases separately.

ⁱⁱ Please note that all numbers less than five have been suppressed in line with patient confidentiality and if there is only one number less than five in a category then two numbers will be suppressed at the next level (e.g. <10) in order to prevent back calculations from totals.

ⁱⁱⁱ Includes: discharged, discharged to care of GP, discharged – to return if condition gets worse, discharged to another hospital, own discharge and discharged to dentist.